

Butterfly Conservation Europe: Partner meeting

ANL conference centre, Laufen

2 – 5 December 2025



Aims of the meeting:

1. To update partners on progress with the eBMS
2. To discuss how to support and grow national BMS
3. To update partners on the EUPOMS
4. To discuss the POLLHAB project to identify typical species
5. To discuss the future of moth monitoring
6. To discuss how to use data in Policy Evaluation
7. To celebrate Butterfly Conservation Europe's 21st Birthday

Event funded by the EU projects EMBRACE: Expanding Monitoring of Butterflies for Restoration And Conservation across Europe 2021-2026. EC-ENV/2024/NP/0040 and POLLHAB: Pollinators typical of habitats protected under the habitats directive EC-ENV/2024/OP/0020. ANL is the organiser, host and supporter of this event.



Programme

Tuesday 2nd December

eBMS – European Butterfly Monitoring Scheme

14:00 – 17:30 Delegates arrive [chair by Martin Warren]

17:30 Welcome by Nigel Bourn, Chair Butterfly Conservation Europe (BCE)

17:35 Outline of meeting – Martin Warren and Cristina Sevilleja, BCE

17:40 *Round table: Short introduction from each delegate*

{ **19:30 Dinner** }

Wednesday 3rd December

Session 1: eBMS and EMBRACE update [chair by Martin Warren]

- 09:00 Welcome from Dr Barbara Stammel, Director ANL
- 09:05 The EU perspective – Andreas Gumbert, DG Environment
- 09:20 EMBRACE update – Chris van Swaay, Dutch BC
- 09:35 eBMS database and GBI update – Reto Schmucki, UK Centre for Ecology and Hydrology (UKCEH)
- 09:55 Using the ButterflyCount app to monitor agriculture and urban areas - Guy Pe'er, UFZ



10:15 – 10:45 Coffee/tea

Session 2: eBMS survey feedback [chair by David Roy]

- 10:45 Introduction to this session on recorder feedback – David Roy, UKCEH
- 10:50 Results of feedback survey of eBMS users – Martha Henson, Tech work for Us (*online*)
- 11:05 Example feedback templates for eBMS recorders– Simon Rolph, UKCEH
- 11:20 *Breakout groups to discuss analysis and feedback requirements*
- 12:10 Feedback from breakout groups

12:40 – 14:00 Lunch

14:00 – 15:00 Walk outside: *meeting point main entrance at 14h*

Session 3: Implementing Nature Restoration Regulation – opportunities and implications [chair Sue Collins]

- 15:00 Nature Restoration Regulation, GBI and EUPOMS – Aidan Whitfield, Policy Advisor, BCE
- 15:30 *Round table discussion: focus on challenges for MS to implement NRR (Art 10 and Art 11)) and how BCE can help* (chair by Sue)

16:15 – 16:45 Coffee/tea



Session 4: Relation with MS & wider Funding opportunities [chair Anu Tiitsaar]

- 16:45 Funding from the private sector – Albert Vliegthart, Dutch BC
- 17:05 Making the case for funding BMS - overview examples from countries who negotiate with their governments – Martin Warren, BCE
- Catalonia – Constanti Stefanescu, CBMS Italy – Simona Bonelli, Turin University
- Sweden – Lars Petterson, Lund University Portugal – Eva Monteiro, Tagis NGO
- 17:55 *Round table discussion: How to promote the value of butterfly monitoring and make the case for support?*
- 18:15 Conclusions of discussion

19:30 Dinner

Thursday 4th December

Session 5: Growing the eBMS [chair Lars Petterson]

09:00 Overview eBMS network and tools – Cristina Sevilleja, Dutch BC

09:20 Short talks by selected BMS coordinators: status of several recent schemes

Romania - László Rákossy; Slovenia – Barbara Zakšek; Denmark – Anne Eskildsen

10:20 EPIC-Butterfly; training courses for butterflies – Juan Pablo Cancela, BCE

{ 10:40 – 11:10 Coffee/tea }



Session 6: Moth Monitoring [chair Constanti Stefanescu]

11:10 Moth Red List update – Jurrien van Deijk, Dutch BC

11:30 Moth monitoring in EUPOMS – Sue Collins, BCE

11:50 Portugal Moth Monitoring Scheme – Helder Cardoso, REBN

12:10 UK's Priority Moth Monitoring Scheme – Nigel Bourn, BCE

12:20 *Open discussion: How to build a Moth Network in Europe?* (chair by Jurrien)

{ 12:40 – 14:00 Lunch }

14:00 Walk outside: main entrance meeting point at 14h

Session 7: Using eBMS Data at national level [chair Martina Šašić]

15:00 Overview of National GBI Indicators – Chris van Swaay, Dutch BC

15:15 German GBI Indicator – Elisabeth Kühn, Germany BMS (UFZ)

15:30 Luxembourg GBI Indicator – Xavier Mestdagh, Luxembourg BMS

{ 15:45 – 16:15 Coffee/tea }



Session 8: Rare species monitoring [chair Irma Wynhoff]

16:15 Introduction and background rare species monitoring in NRR – Aidan Whitfield, BCE

16:25 eBMS 15min counts & transects – Emily Dennis, Butterfly Conservation UK (*online*)

16:45 Contribution of BMS transects and 15-min Counts to the Spanish Butterfly Atlas – Miguel Munguira, Spain BMS

17:00 Rare species monitoring in Switzerland – Goran Dusej, Swiss BMS

17:15 *Round table discussion: Guidelines for monitoring rare species*

17:55 Conclusions of discussion – Irma Wynhoff, Dutch BC

18:00 Summary of eBMS meeting and way ahead – Sue Collins

{ 19:30 Dinner }

Friday 5th December

POLLHAB - Pollinators typical of habitats protected under the Habitats Directive

Session 1: Introduction to the Poll Hab project [chair Aidan Whitfield]

- 09:00 Overview of the Poll Hab project – Sam Ellis, BCE and Dirk Maes, INBO
- 09:30 How to use the Poll Hab web tool for typical species assessments – Dirk Maes and Sam Ellis
- 10:00 Delegates split into one of seven workshop groups: Alpine (Alps, Balkans); Atlantic; Black Sea/Pannonian/Steppic/Alpine (Carpathians); Boreal and Alpine (Scandinavian); Continental; Mediterranean (western); Mediterranean (central and eastern).

{ 10:30 Coffee/tea }

Session 2: Using the Poll Hab web tool for typical species assessments [Dirk Maes and Sam Ellis]

- 11:00 Workshop groups complete typical species assessments for their biogeographical region using Poll Hab web tool
- 12:20 *Workshop leads report back focussing on issues arising from assessments*

{ 12:40 – 14:00 Lunch }

{ 14:00 Walk outside: main entrance meeting point at 14h }



Session 2 (continued): Using the Poll Hab web tool for typical species assessments [chair Dirk Maes and Sam Ellis]

- 15:00 *Workshop leads report back focussing on issues arising from assessments*
- 15:15 Workshop groups continue to complete typical species assessments using Poll Hab web tool

{ 16:00 Coffee/tea }

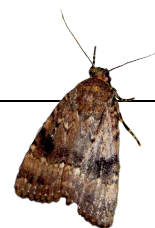
Session 3: Review of completed typical species assessments [Dirk Maes and Sam Ellis]

- 16:30 How do we select a list typical butterfly species from multiple assessments of the same Annex 1 habitat? Round table discussion and development of recommendations to the Poll Hab team
- 17:30 End of the session

18:00 Butterfly Conservation Europe 21st Birthday celebration

Drinks in lobby

- 18:30 21 years of BC Europe – Martin Warren



Saturday 6th December

Breakfast and depart

